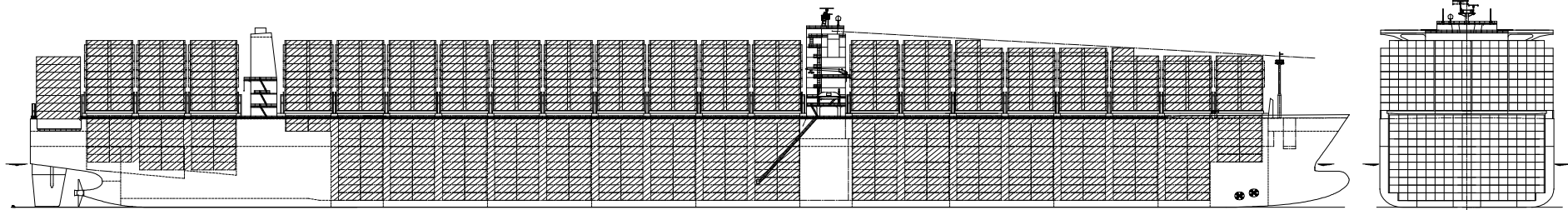




# "MAERSK EINDHOVEN"

## HYUNDAI HEAVY INDUSTRIES CO., LTD

### 13,100 TEU CLASS CONTAINERSHIP



<p><b><u>MAIN DIMENSIONS</u></b></p> <table style="width: 100%; border-collapse: collapse;"> <tr><td>Length over all abt.</td><td style="text-align: right;">366</td><td style="text-align: right;">m</td></tr> <tr><td>Length b.p.</td><td style="text-align: right;">350</td><td style="text-align: right;">m</td></tr> <tr><td>Breadth moulded</td><td style="text-align: right;">48.2</td><td style="text-align: right;">m</td></tr> <tr><td>Depth moulded</td><td style="text-align: right;">29.85</td><td style="text-align: right;">m</td></tr> <tr><td>Draught design (Td)</td><td style="text-align: right;">14.5</td><td style="text-align: right;">m</td></tr> <tr><td>Draught scantling (Ts)</td><td style="text-align: right;">15.5</td><td style="text-align: right;">m</td></tr> </table> <p><b><u>DEADWEIGHT</u></b></p> <table style="width: 100%; border-collapse: collapse;"> <tr><td>Deadweight at Td abt.</td><td style="text-align: right;">125,480</td><td style="text-align: right;">m</td></tr> <tr><td>Deadweight at Ts abt.</td><td style="text-align: right;">140,580</td><td style="text-align: right;">m</td></tr> </table> <p><b><u>CLASSIFICATION</u></b></p> <p>GL +100A5, CONTAINER SHIP, SOLAS II-2 REG.19, +MC, AUT, RSD, Environmental Passport, NAV-O, IW, BWB, MARPOL Annex I Reg.12A</p> <p><b><u>TANK CAPACITIES</u></b></p> <table style="width: 100%; border-collapse: collapse;"> <tr><td>Heavy fuel oil</td><td style="text-align: right;">abt. 12,400</td><td style="text-align: right;">m<sup>3</sup></td></tr> <tr><td>Marine diesel oil</td><td style="text-align: right;">abt. 500</td><td style="text-align: right;">m<sup>3</sup></td></tr> <tr><td>Fresh water</td><td style="text-align: right;">abt. 500</td><td style="text-align: right;">m<sup>3</sup></td></tr> <tr><td>Ballast water</td><td style="text-align: right;">abt. 35,800</td><td style="text-align: right;">m<sup>3</sup></td></tr> </table> <p><b><u>COMPLEMENT</u></b></p> <table style="width: 100%; border-collapse: collapse;"> <tr><td></td><td style="text-align: right;">28+6</td><td style="text-align: right;">p</td></tr> </table>	Length over all abt.	366	m	Length b.p.	350	m	Breadth moulded	48.2	m	Depth moulded	29.85	m	Draught design (Td)	14.5	m	Draught scantling (Ts)	15.5	m	Deadweight at Td abt.	125,480	m	Deadweight at Ts abt.	140,580	m	Heavy fuel oil	abt. 12,400	m <sup>3</sup>	Marine diesel oil	abt. 500	m <sup>3</sup>	Fresh water	abt. 500	m <sup>3</sup>	Ballast water	abt. 35,800	m <sup>3</sup>		28+6	p	<p><b><u>CONTAINER CAPACITIES</u></b></p> <table style="width: 100%; border-collapse: collapse;"> <tr><td colspan="2">With max. number of Containers (SOLAS Visibility)</td></tr> <tr><td>On deck (9 tiers)</td><td style="text-align: right;">7,074 TEU</td></tr> <tr><td>In hold (11 tiers)</td><td style="text-align: right;">6,018 TEU</td></tr> <tr><td>Total</td><td style="text-align: right;">13,092 TEU</td></tr> <tr><td>Rows max. in holds/on hatches</td><td style="text-align: right;">17/19 Row</td></tr> </table> <p>9'6" Container x 10 tiers or 9'6" Container x 1 tier + 8'6" Container x 10 tiers to be stowed in hold</p> <p>Reefer Container</p> <table style="width: 100%; border-collapse: collapse;"> <tr><td>On deck</td><td style="text-align: right;">40'</td><td style="text-align: right;">800 Units</td></tr> </table> <p>No. of loaded Container at Ts abt. 8,900 TEU (Based on 14T/TEU, 100% consumables, 8'6", 45%VCG)</p> <p><b><u>MAIN ENGINE</u></b></p> <table style="width: 100%; border-collapse: collapse;"> <tr><td>TYPE</td><td colspan="2">HYUNDAI-Wärtsilä 12RT-flex 96C</td></tr> <tr><td>MCR</td><td style="text-align: right;">68,640 kW</td><td style="text-align: right;">x 102.0 rpm</td></tr> <tr><td>NCR</td><td style="text-align: right;">61,776 kW</td><td style="text-align: right;">x 98.5 rpm</td></tr> </table> <p><b><u>SERVICE SPEED</u></b></p> <table style="width: 100%; border-collapse: collapse;"> <tr><td>Service Speed at Td</td><td style="text-align: right;">abt. 24.3</td><td style="text-align: right;">kts</td></tr> <tr><td>Sea margin</td><td style="text-align: right;">15</td><td style="text-align: right;">%</td></tr> </table>	With max. number of Containers (SOLAS Visibility)		On deck (9 tiers)	7,074 TEU	In hold (11 tiers)	6,018 TEU	Total	13,092 TEU	Rows max. in holds/on hatches	17/19 Row	On deck	40'	800 Units	TYPE	HYUNDAI-Wärtsilä 12RT-flex 96C		MCR	68,640 kW	x 102.0 rpm	NCR	61,776 kW	x 98.5 rpm	Service Speed at Td	abt. 24.3	kts	Sea margin	15	%	<p><b><u>FUEL OIL CONSUMPTION OF MAIN ENGINE</u></b></p> <table style="width: 100%; border-collapse: collapse;"> <tr><td>D.F.O.C at NCR</td><td style="text-align: right;">abt. 247.3</td><td style="text-align: right;">t/d</td></tr> </table> <p><b><u>CRUISE RANGE</u></b></p> <table style="width: 100%; border-collapse: collapse;"> <tr><td></td><td style="text-align: right;">26,900</td><td style="text-align: right;">NM</td></tr> </table> <p><b><u>CARGO HATCH COVER</u></b></p> <table style="width: 100%; border-collapse: collapse;"> <tr><td>Type</td><td colspan="2">Steel pontoon type, non-sequential</td></tr> <tr><td>Stack weight</td><td style="text-align: right;">90 tons for 20 ft,</td><td style="text-align: right;">140 tons for 40 ft</td></tr> <tr><td>Max. Panel weight</td><td colspan="2">40 tons incl. container loose fittings</td></tr> </table> <p><b><u>POWER SUPPLY</u></b></p> <table style="width: 100%; border-collapse: collapse;"> <tr><td>Diesel generator</td><td style="text-align: right;">2,700kW</td><td style="text-align: right;">x 5 sets</td></tr> <tr><td>Emergency generator</td><td style="text-align: right;">300 kW</td><td style="text-align: right;">x 1 set</td></tr> </table> <p>Ring-Net System for Reefer Containers</p> <p><b><u>NAVIGATION EQUIPMENT</u></b></p> <ol style="list-style-type: none"> <li>1- ECDIS, Conning Display &amp; Route Planning</li> <li>2- Radars (ARPA)</li> <li>1- Gyro Compass &amp; Auto Pilot</li> <li>1- Speed Log</li> <li>2- DGPS Navigators</li> </ol>	D.F.O.C at NCR	abt. 247.3	t/d		26,900	NM	Type	Steel pontoon type, non-sequential		Stack weight	90 tons for 20 ft,	140 tons for 40 ft	Max. Panel weight	40 tons incl. container loose fittings		Diesel generator	2,700kW	x 5 sets	Emergency generator	300 kW	x 1 set
Length over all abt.	366	m																																																																																								
Length b.p.	350	m																																																																																								
Breadth moulded	48.2	m																																																																																								
Depth moulded	29.85	m																																																																																								
Draught design (Td)	14.5	m																																																																																								
Draught scantling (Ts)	15.5	m																																																																																								
Deadweight at Td abt.	125,480	m																																																																																								
Deadweight at Ts abt.	140,580	m																																																																																								
Heavy fuel oil	abt. 12,400	m <sup>3</sup>																																																																																								
Marine diesel oil	abt. 500	m <sup>3</sup>																																																																																								
Fresh water	abt. 500	m <sup>3</sup>																																																																																								
Ballast water	abt. 35,800	m <sup>3</sup>																																																																																								
	28+6	p																																																																																								
With max. number of Containers (SOLAS Visibility)																																																																																										
On deck (9 tiers)	7,074 TEU																																																																																									
In hold (11 tiers)	6,018 TEU																																																																																									
Total	13,092 TEU																																																																																									
Rows max. in holds/on hatches	17/19 Row																																																																																									
On deck	40'	800 Units																																																																																								
TYPE	HYUNDAI-Wärtsilä 12RT-flex 96C																																																																																									
MCR	68,640 kW	x 102.0 rpm																																																																																								
NCR	61,776 kW	x 98.5 rpm																																																																																								
Service Speed at Td	abt. 24.3	kts																																																																																								
Sea margin	15	%																																																																																								
D.F.O.C at NCR	abt. 247.3	t/d																																																																																								
	26,900	NM																																																																																								
Type	Steel pontoon type, non-sequential																																																																																									
Stack weight	90 tons for 20 ft,	140 tons for 40 ft																																																																																								
Max. Panel weight	40 tons incl. container loose fittings																																																																																									
Diesel generator	2,700kW	x 5 sets																																																																																								
Emergency generator	300 kW	x 1 set																																																																																								