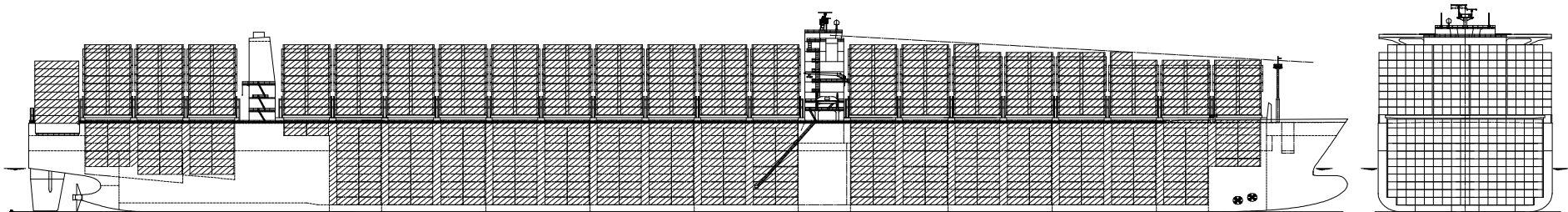




"MAERSK ESSEN"

HYUNDAI HEAVY INDUSTRIES CO., LTD

13,100 TEU CLASS CONTAINER HIP



<u>MAIN DIMENSIONS</u>		
Length over all abt.	366	m
Length b.p.	350	m
Breadth moulded	48.2	m
Depth moulded	29.85	m
Draught design (Td)	14.5	m
Draught scantling (Ts)	15.5	m
<u>DEADWEIGHT</u>		
Deadweight at Td abt.	125,480	m
Deadweight at Ts abt.	140,580	m
<u>CLASSIFICATION</u>		
GL	+100A5, CONTAINER SHIP, SOLAS II-2 REG.19, +MC, AUT, RSD, Environmental Passport, NAV-O, IW, BWM, MARPOL Annex I Reg.12A	
<u>TANK CAPACITIES</u>		
Heavy fuel oil	abt. 12,400	m ³
Marine diesel oil	abt. 500	m ³
Fresh water	abt. 500	m ³
Ballast water	abt. 35,800	m ³
<u>COMPLEMENT</u>	28+6	p

<u>CONTAINER CAPACITIES</u>		
With max. number of Containers (SOLAS Visibility)		
On deck (9 tiers)	7,074	TEU
In hold (11 tiers)	6,018	TEU
Total	13,092	TEU
Rows max. in holds/on hatches	17/19	Row
9'6" Container x 10 tiers or 9'6" Container x 1 tier + 8'6" Container x 10 tiers to be stowed in hold		
Reefer Container		
On deck	40'	800 Units
No. of loaded Container at Ts abt. 8,900 TEU (Based on 14T/TEU, 100% consumables, 8'6", 45%VCG)		
<u>MAIN ENGINE</u>		
TYPE	HYUNDAI-Wärtsilä 12RT-flex 96C	
MCR	68,640	kW x 102.0 rpm
NCR	61,776	kW x 98.5 rpm
<u>SERVICE SPEED</u>		
Service Speed at Td	abt. 24.3	kts
Sea margin	15	%

<u>FUEL OIL CONSUMPTION OF MAIN ENGINE</u>			
D.F.O.C at NCR	abt. 247.3	t/d	
<u>CRUISE RANGE</u>		26,900	NM
<u>CARGO HATCH COVER</u>			
Type	Steel pontoon type, non-sequential		
Stack weight	90 tons for 20 ft, 140 tons for 40 ft		
Max. Panel weight	40 tons incl. container loose fittings		
<u>POWER SUPPLY</u>			
Diesel generator	2,700kW x 5 sets		
Emergency generator	300 kW x 1 set		
Ring-Net System for Reefer Containers			
<u>NAVIGATION EQUIPMENT</u>			
1- ECDIS, Conning Display & Route Planning			
2- Radars (ARPA)			
1- Gyro Compass & Auto Pilot			
1- Speed Log			
2- DGPS Navigators			